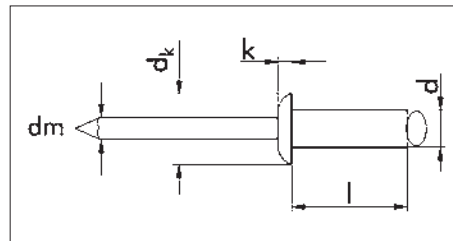
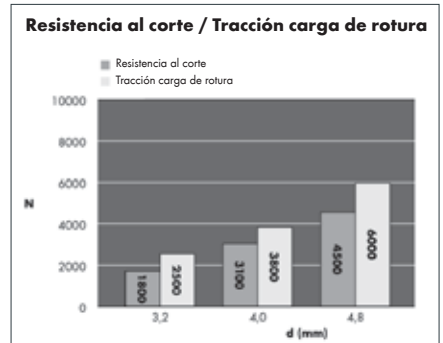


REMACHE CIEGO CABEZA REBAJADA



Remache ciego cabeza alomada UNE-EN ISO 15983

- Cabeza: Acero inox, A2.
- Espiga: Acero inox A2.



d x l mm	∅ Taladro mm	Grosor a remachar mm	d _k mm	K mm	dm mm	Carga de cizalla- miento(N)	Fuerza de tracción (N)	Art. N°	U/E
3.0 x 6	3.1	1.0-3.0	6.5	0.8	1.95	1600	2000	0931 930 6 *	500
3.0 x 8		3.0-5.0						0931 930 8 *	
3.0 x 10		5.0-7.0						0931 930 10*	
3.0 x 12		7.0-9.0						0931 930 12*	
3.2 x 6	3.3	1.0-3.0	6.5	0.8	1.95	1800	2500	0931 932 6 *	500
3.2 x 8		3.0-5.0						0931 932 8 *	
3.2 x 10		5.0-7.0						0931 932 10*	
3.2 x 12		7.0-9.0						0931 932 12*	
4.0 x 6	4.1	1.0-2.5	8.0	1.0	2.5	3100	3800	0931 940 6	100/ 500
4.0 x 8		2.5-4.5						0931 940 8 *	
4.0 x 10		4.5-6.5						0931 940 10*	
4.0 x 12		6.5-8.5						0931 940 12	
4.0 x 14		8.5-10.5						0931 940 14*	
4.0 x 16		10.5-12.0						0931 940 16	
4.0 x 18		12.0-14.0						0931 940 18*	
4.0 x 20		14.0-16.0						0931 940 20	
4.8 x 8	4.9	1.5-4.0	9.5	1.1	2.9	4500	6000	0931 948 8 *	100/ 250
4.8 x 10		4.0-6.0						0931 948 10*	
4.8 x 12		6.0-8.0						0931 948 12*	
4.8 x 14		8.0-9.5						0931 948 14*	
4.8 x 16		9.5-11.0						0931 948 16*	
5.0 x 8	5.1	2.0-4.0	9.5	1.1	2.9	5000	6500	0931 950 8	100/ 250
5.0 x 10		4.0-6.0						0931 950 10*	
5.0 x 12		6.0-8.0						0931 950 12*	
5.0 x 14		8.0-10.0						0931 950 14	
5.0 x 16		10.0-12.0						0931 950 16*	
6.4 x 10	6.5	2.0-4.0	13.0	1.8	3.85	6500	8850	0931 964 10*	250
6.4 x 12		4.0-6.0						0931 964 12	
6.4 x 15		6.0-9.0						0931 964 15*	
6.4 x 18		9.0-13.0						0931 964 18*	
4,8 x 11,0	4,9	3,5-6,5	9,8	1,5		1550	2230	0931 48 16	

* Pedido especial